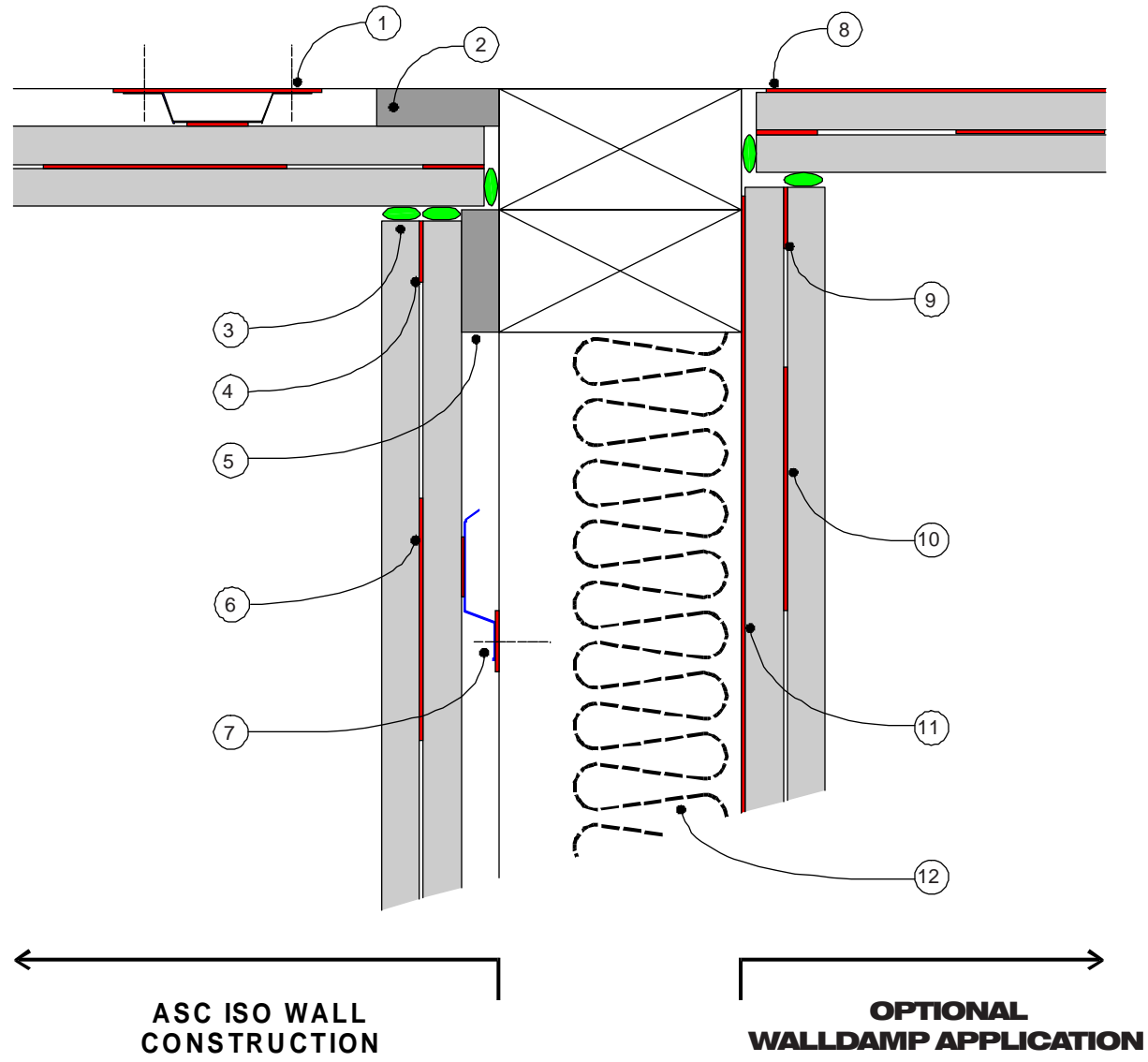
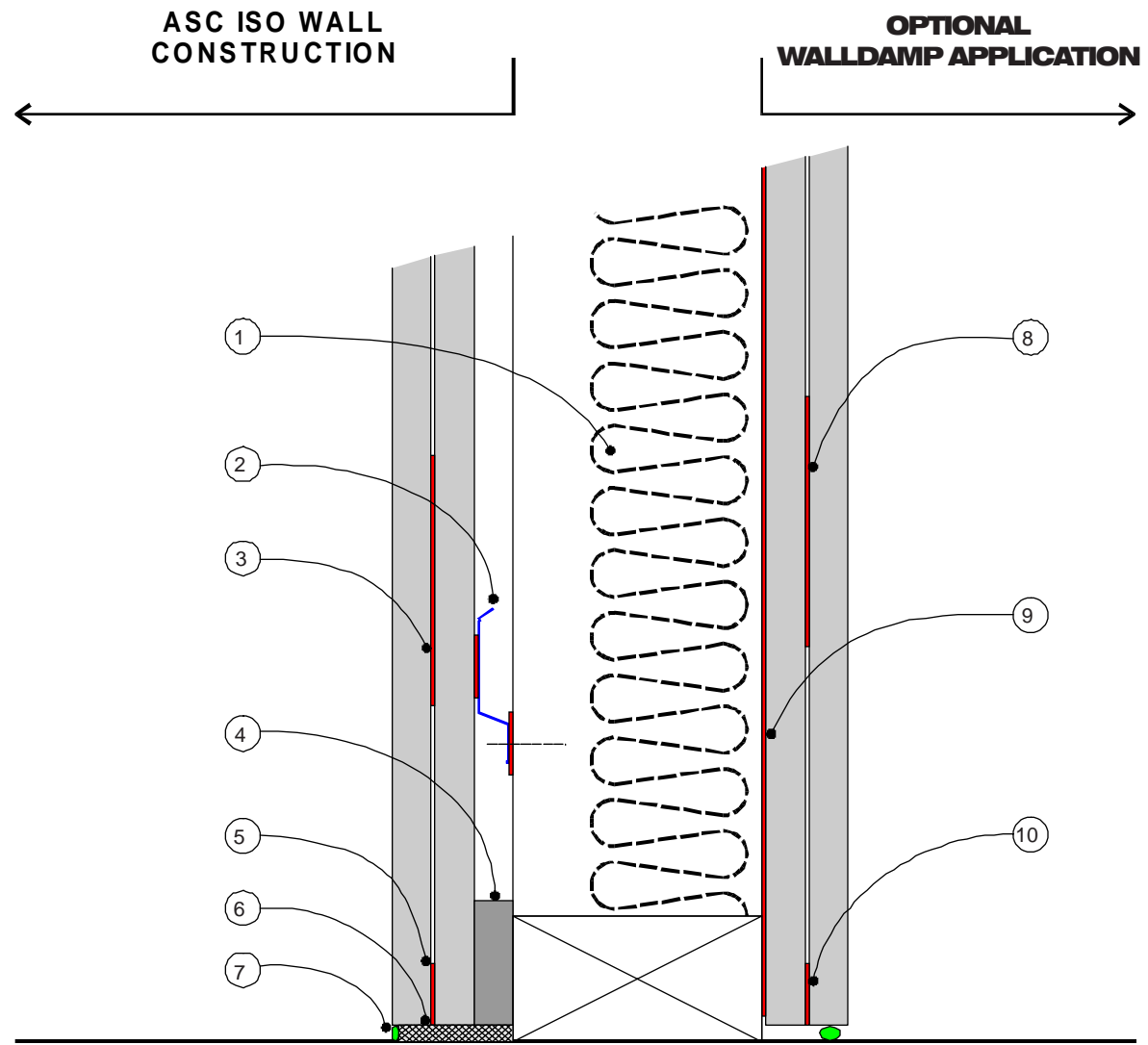


- (1) DAMPED RESILIENT CHANNEL (dRC-2)
SCREW TO JOIST (WITH WALLDAMP STRIP IN BETWEEN)
- (2) PERIMETER GASKET ON CEILING
- (3) ACOUSTICAL SEALANT
- (4) WALLDAMP STRIP AROUND PERIMETER
- (5) PERIMETER GASKET ON TOP PLATE
- (6) WALLDAMP SQUARE BETWEEN WALLBOARDS
- (7) DAMPED RESILIENT CHANNEL (dRC-1)
SCREW TO STUD (WITH WALLDAMP STRIP IN BETWEEN)
- (8) WALLDAMP STRIP ON FACE OF JOIST
- (9) WALLDAMP STRIP AROUND PERIMETER
- (10) WALLDAMP SQUARE BETWEEN WALLBOARDS
- (11) WALLDAMP STRIP ON FACE OF STUD
- (12) 3" INSULATION BLANKET



SECTION, WALL /CEILING DETAIL
 ISO WALL™ CONSTRUCTION AND WALLDAMP™ APPLICATION

- (1) 3" INSULATION BLANKET
- (2) DAMPED RESILIENT CHANNEL (dRC-1)
SCREW TO STUD (WITH WALLDAMP STRIP
IN BETWEEN)
- (3) WALLDAMP SQUARE BETWEEN
WALLBOARDS
- (4) PERIMETER GASKET ON SOLE PLATE
- (5) WALLDAMP STRIP AROUND PERIMETER
- (6) WALL BEARING FELT
- (7) ACOUSTICAL SEALANT
- (8) WALLDAMP SQUARE BETWEEN
WALLBOARDS
- (9) WALLDAMP STRIP ON FACE OF JOIST
- (10) WALLDAMP STRIP AROUND PERIMETER



SECTION, WALL /FLOOR DETAIL
ISO WALL™ CONSTRUCTION AND WALLDAMP™ APPLICATION

dRC-1™ SAMPLE SPACING FOR VARIOUS CEILING HEIGHTS (FOR STUDS 16 O.C.)

